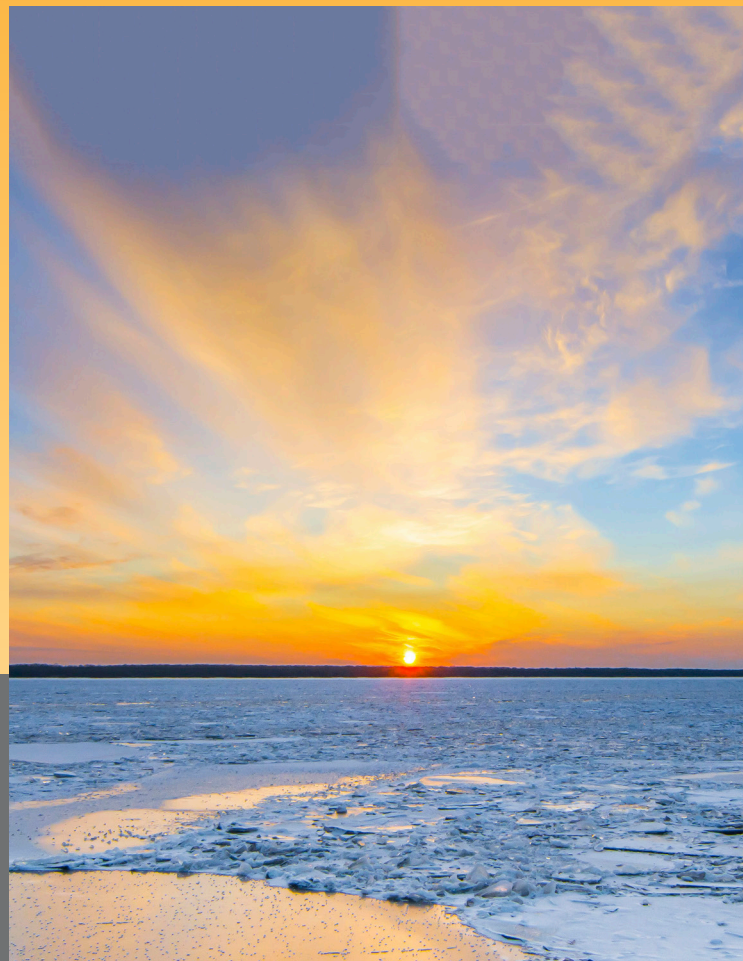




Bank of Russia



# CONSUMER PRICE INDICES

No. 1 (199) • January 2020

Information bulletin

11 February 2020

CONSUMER PRICES BY GROUP OF GOODS AND SERVICES  
(PER CENT CHANGE MONTH-ON-MONTH)

Table 1

	Inflation	Core inflation	Food	Food <sup>1</sup>	Fruit and vegetables	Non-food goods	Non-food goods excluding petrol	Services
<b>2018</b>								
January	0.3	0.2	0.5	0.1	4.0	0.3	0.3	0.1
February	0.2	0.1	0.4	0.0	3.1	0.1	0.1	0.1
March	0.3	0.1	0.5	0.1	4.2	0.2	0.2	0.1
April	0.4	0.3	0.4	0.2	2.6	0.4	0.3	0.3
May	0.4	0.2	-0.1	0.1	-1.3	0.9	0.3	0.4
June	0.5	0.3	0.4	0.4	0.6	0.4	0.2	0.7
July	0.3	0.3	-0.3	0.3	-5.1	0.1	0.2	1.3
August	0.0	0.3	-0.4	0.4	-6.4	0.2	0.3	0.3
September	0.2	0.5	-0.1	0.7	-6.8	0.4	0.4	0.2
October	0.4	0.4	0.6	0.7	-1.1	0.5	0.5	-0.1
November	0.5	0.4	1.0	0.7	3.4	0.4	0.4	0.0
December	0.8	0.5	1.7	0.9	8.9	0.2	0.3	0.4
Total for the year (December on December)	4.3	3.7	4.7	4.6	4.9	4.1	3.4	3.9
<b>2019</b>								
January	1.0	0.6	1.3	0.7	6.3	0.6	0.6	1.1
February	0.4	0.4	0.8	0.3	4.9	0.3	0.3	0.2
March	0.3	0.3	0.5	0.3	2.1	0.3	0.3	0.1
April	0.3	0.3	0.4	0.2	1.8	0.2	0.2	0.2
May	0.3	0.3	0.4	0.2	2.0	0.2	0.2	0.4
June	0.0	0.2	-0.5	0.1	-4.5	0.2	0.1	0.6
July	0.2	0.2	-0.3	0.2	-3.9	0.2	0.2	0.9
August	-0.2	0.2	-0.9	0.3	-10.1	0.2	0.2	0.2
September	-0.2	0.2	-0.4	0.2	-6.3	0.2	0.2	-0.2
October	0.1	0.2	0.2	0.2	0.4	0.3	0.3	-0.2
November	0.3	0.2	0.5	0.2	2.7	0.2	0.3	0.1
December	0.4	0.1	0.7	0.3	3.8	0.1	0.2	0.2
Total for the year (December on December)	3.0	3.1	2.6	3.1	-2.0	3.0	3.1	3.8
<b>2020</b>								
January	0.4	0.2	0.7	0.1	5.7	0.2	0.2	0.2

<sup>1</sup> Excluding fruit and vegetables.

CONSUMER PRICES BY GROUP OF GOODS AND SERVICES  
(PER CENT CHANGE MONTH-ON-MONTH, SEASONALLY ADJUSTED)

Table 2

	Inflation	Core inflation	Food	Food <sup>1</sup>	Fruit and vegetables	Non-food goods	Non-food goods excluding petrol	Services
<b>2018</b>								
January	0.1	0.0	-0.2	0.0	-2.1	0.3	0.3	0.2
February	0.1	0.1	-0.1	0.0	-0.5	0.1	0.2	0.2
March	0.2	0.2	0.3	0.0	2.2	0.1	0.2	0.3
April	0.4	0.3	0.3	0.2	1.2	0.4	0.3	0.4
May	0.4	0.3	-0.1	0.3	-3.4	0.9	0.3	0.3
June	0.5	0.4	0.6	0.6	1.1	0.5	0.3	0.4
July	0.1	0.4	0.2	0.4	-0.6	0.2	0.3	-0.2
August	0.5	0.4	0.9	0.4	5.0	0.2	0.3	0.4
September	0.5	0.4	0.5	0.6	-0.5	0.3	0.3	0.7
October	0.4	0.4	0.4	0.6	-1.7	0.3	0.3	0.4
November	0.4	0.3	0.6	0.7	0.5	0.3	0.3	0.3
December	0.6	0.4	1.0	0.8	3.8	0.3	0.3	0.4
<b>2019</b>								
January	0.8	0.4	0.5	0.6	0.2	0.7	0.7	1.2
February	0.3	0.4	0.4	0.2	1.2	0.3	0.3	0.3
March	0.3	0.4	0.2	0.2	0.1	0.2	0.3	0.3
April	0.3	0.4	0.3	0.2	0.4	0.2	0.2	0.3
May	0.3	0.4	0.4	0.5	-0.1	0.2	0.2	0.3
June	0.1	0.3	-0.2	0.3	-3.9	0.3	0.2	0.3
July	0.0	0.3	0.2	0.2	0.6	0.3	0.3	-0.5
August	0.2	0.2	0.3	0.3	0.8	0.2	0.2	0.3
September	0.2	0.1	0.2	0.2	0.1	0.1	0.1	0.2
October	0.1	0.1	0.0	0.0	-0.2	0.2	0.2	0.3
November	0.2	0.1	0.1	0.1	-0.2	0.2	0.2	0.4
December	0.1	0.0	0.0	0.1	-1.1	0.2	0.2	0.2
<b>2020</b>								
January	0.2	0.0	0.0	0.0	-0.4	0.3	0.3	0.4

<sup>1</sup> Excluding fruit and vegetables.

CONSUMER PRICES BY GROUP OF GOODS AND SERVICES  
(PER CENT CHANGE YEAR-TO-DATE)

Table 3

	Inflation	Core inflation	Food	Food <sup>1</sup>	Fruit and vegetables	Non-food goods	Non-food goods excluding petrol	Services
<b>2018</b>								
January	0.3	0.2	0.5	0.1	4.0	0.3	0.3	0.1
February	0.5	0.3	0.9	0.1	7.2	0.4	0.4	0.2
March	0.8	0.4	1.4	0.2	11.8	0.6	0.6	0.3
April	1.2	0.7	1.8	0.3	14.6	1.0	0.9	0.6
May	1.6	0.9	1.8	0.4	13.1	1.9	1.2	1.0
June	2.1	1.2	2.2	0.8	13.7	2.3	1.4	1.7
July	2.4	1.5	1.8	1.1	7.9	2.4	1.5	3.0
August	2.4	1.9	1.4	1.5	1.0	2.6	1.8	3.3
September	2.5	2.3	1.3	2.2	-5.8	3.0	2.2	3.6
October	2.9	2.8	1.9	2.9	-6.9	3.5	2.7	3.5
November	3.4	3.2	2.9	3.7	-3.7	3.9	3.1	3.5
December	4.3	3.7	4.7	4.6	4.9	4.1	3.4	3.9
<b>2019</b>								
January	1.0	0.6	1.3	0.7	6.3	0.6	0.6	1.1
February	1.5	1.0	2.1	0.9	11.5	0.9	0.9	1.3
March	1.8	1.3	2.6	1.3	13.9	1.2	1.2	1.5
April	2.1	1.6	3.1	1.5	16.0	1.3	1.5	1.7
May	2.4	1.9	3.5	1.7	18.3	1.6	1.7	2.1
June	2.5	2.1	3.0	1.8	13.0	1.7	1.8	2.7
July	2.7	2.3	2.7	2.0	8.5	1.9	1.9	3.6
August	2.4	2.5	1.7	2.2	-2.4	2.1	2.1	3.8
September	2.3	2.6	1.3	2.4	-8.6	2.3	2.3	3.6
October	2.4	2.8	1.5	2.6	-8.2	2.6	2.7	3.4
November	2.7	3.0	1.9	2.8	-5.7	2.8	2.9	3.5
December	3.0	3.1	2.6	3.1	-2.0	3.0	3.1	3.8
<b>2020</b>								
January	0.4	0.2	0.7	0.1	5.7	0.2	0.2	0.2

<sup>1</sup> Excluding fruit and vegetables.

CONSUMER PRICES BY GROUP OF GOODS AND SERVICES  
(PER CENT CHANGE ON CORRESPONDING MONTH OF PREVIOUS YEAR)

Table 4

	Inflation	Core inflation	Food	Food <sup>1</sup>	Fruit and vegetables	Non-food goods	Non-food goods excluding petrol	Services
<b>2018</b>								
January	2.2	1.9	0.7	0.8	-0.1	2.6	2.1	3.9
February	2.2	1.9	0.9	0.7	2.4	2.5	2.1	3.7
March	2.4	1.8	1.3	0.6	6.4	2.4	2.1	3.9
April	2.4	1.9	1.1	0.7	4.2	2.7	2.3	4.0
May	2.4	2.0	0.4	0.8	-2.8	3.4	2.5	4.0
June	2.3	2.3	-0.2	1.1	-9.8	3.7	2.7	4.1
July	2.5	2.4	0.5	1.4	-6.7	3.8	2.8	3.8
August	3.1	2.6	1.9	1.7	3.3	3.8	2.9	3.7
September	3.4	2.8	2.5	2.5	3.4	4.0	3.1	3.8
October	3.5	3.1	2.7	3.1	-0.5	4.1	3.2	4.0
November	3.8	3.4	3.5	3.8	0.8	4.2	3.3	3.8
December	4.3	3.7	4.7	4.6	4.9	4.1	3.4	3.9
<b>2019</b>								
January	5.0	4.1	5.5	5.2	7.3	4.5	3.8	5.0
February	5.2	4.4	5.9	5.5	9.1	4.6	4.0	5.1
March	5.3	4.6	5.9	5.7	6.9	4.7	4.1	5.1
April	5.2	4.6	5.9	5.8	6.1	4.5	4.0	5.0
May	5.1	4.7	6.4	5.9	9.7	3.8	3.9	5.1
June	4.7	4.6	5.5	5.6	4.2	3.5	3.8	4.9
July	4.6	4.5	5.5	5.5	5.4	3.6	3.8	4.5
August	4.3	4.3	5.0	5.4	1.3	3.5	3.7	4.4
September	4.0	4.0	4.6	4.9	1.8	3.4	3.5	4.0
October	3.8	3.7	4.2	4.3	3.4	3.2	3.4	3.8
November	3.5	3.5	3.7	3.7	2.8	3.1	3.2	3.9
December	3.0	3.1	2.6	3.1	-2.0	3.0	3.1	3.8
<b>2020</b>								
January	2.4	2.7	2.0	2.5	-2.6	2.5	2.7	2.8

<sup>1</sup> Excluding fruit and vegetables.

**INCREASE IN INFLATION DUE TO PRICE CHANGES BY GROUP  
OF GOODS AND SERVICES, YEAR-TO-DATE  
(PERCENTAGE POINTS)**

Table 5

	Food <sup>1</sup>	Non-food goods	Services	Fruit and vegetables	Inflation for the period, %	Core inflation	Non-core inflation <sup>2</sup>
<b>2018</b>							
January	0.0	0.1	0.0	0.2	<b>0.3</b>	0.1	0.2
February	0.0	0.2	0.1	0.3	<b>0.5</b>	0.2	0.3
March	0.1	0.2	0.1	0.5	<b>0.8</b>	0.3	0.5
April	0.1	0.3	0.2	0.6	<b>1.2</b>	0.5	0.7
May	0.1	0.7	0.3	0.5	<b>1.6</b>	0.6	0.9
June	0.3	0.8	0.5	0.5	<b>2.1</b>	0.9	1.2
July	0.4	0.8	0.8	0.3	<b>2.4</b>	1.1	1.3
August	0.5	0.9	0.9	0.0	<b>2.4</b>	1.3	1.1
September	0.7	1.1	1.0	-0.2	<b>2.5</b>	1.6	0.9
October	1.0	1.2	1.0	-0.3	<b>2.9</b>	1.9	0.9
November	1.2	1.4	1.0	-0.1	<b>3.4</b>	2.3	1.1
December	1.6	1.4	1.1	0.2	<b>4.3</b>	2.6	1.7
<b>2019</b>							
January	0.2	0.2	0.3	0.3	<b>1.0</b>	0.4	0.6
February	0.3	0.3	0.4	0.5	<b>1.5</b>	0.7	0.8
March	0.4	0.4	0.4	0.6	<b>1.8</b>	0.9	0.9
April	0.5	0.5	0.5	0.6	<b>2.1</b>	1.1	1.0
May	0.6	0.5	0.6	0.7	<b>2.4</b>	1.3	1.1
June	0.6	0.6	0.7	0.5	<b>2.5</b>	1.5	1.0
July	0.7	0.7	1.0	0.3	<b>2.7</b>	1.6	1.1
August	0.7	0.7	1.1	-0.1	<b>2.4</b>	1.7	0.7
September	0.8	0.8	1.0	-0.3	<b>2.3</b>	1.8	0.4
October	0.9	0.9	0.9	-0.3	<b>2.4</b>	1.9	0.4
November	0.9	1.0	1.0	-0.2	<b>2.7</b>	2.1	0.6
December	1.0	1.0	1.0	-0.1	<b>3.0</b>	2.2	0.8
<b>2020</b>							
January	0.0	0.1	0.1	0.2	<b>0.4</b>	0.1	0.3

<sup>1</sup>Excluding fruit and vegetables.<sup>2</sup>Increase in prices of goods and services excluded from the core consumer price index.

**INCREASE IN INFLATION DUE TO PRICE CHANGES BY GROUP  
OF GOODS AND SERVICES, MONTH-ON-MONTH  
(PERCENTAGE POINTS)**

Table 6

	Food <sup>1</sup>	Non-food goods	Services	Fruit and vegetables	Inflation for the period, %	Core inflation	Non-core inflation <sup>2</sup>
<b>2018</b>							
January	0.0	0.1	0.0	0.2	<b>0.3</b>	0.1	0.2
February	0.0	0.0	0.0	0.1	<b>0.2</b>	0.1	0.1
March	0.0	0.1	0.0	0.2	<b>0.3</b>	0.1	0.2
April	0.1	0.1	0.1	0.1	<b>0.4</b>	0.2	0.2
May	0.0	0.3	0.1	-0.1	<b>0.4</b>	0.2	0.2
June	0.1	0.1	0.2	0.0	<b>0.5</b>	0.2	0.3
July	0.1	0.0	0.3	-0.2	<b>0.3</b>	0.2	0.1
August	0.1	0.1	0.1	-0.2	<b>0.0</b>	0.2	-0.2
September	0.2	0.1	0.1	-0.3	<b>0.2</b>	0.3	-0.2
October	0.3	0.2	0.0	0.0	<b>0.4</b>	0.3	0.0
November	0.3	0.1	0.0	0.1	<b>0.5</b>	0.3	0.2
December	0.3	0.1	0.1	0.3	<b>0.8</b>	0.3	0.5
<b>2019</b>							
January	0.2	0.2	0.3	0.3	<b>1.0</b>	0.4	0.6
February	0.1	0.1	0.1	0.2	<b>0.4</b>	0.3	0.2
March	0.1	0.1	0.0	0.1	<b>0.3</b>	0.2	0.1
April	0.1	0.1	0.1	0.1	<b>0.3</b>	0.2	0.1
May	0.1	0.1	0.1	0.1	<b>0.3</b>	0.2	0.1
June	0.0	0.1	0.2	-0.2	<b>0.0</b>	0.2	-0.1
July	0.1	0.1	0.3	-0.2	<b>0.2</b>	0.1	0.1
August	0.1	0.1	0.0	-0.4	<b>-0.2</b>	0.1	-0.4
September	0.1	0.1	-0.1	-0.3	<b>-0.2</b>	0.1	-0.3
October	0.1	0.1	0.0	0.0	<b>0.1</b>	0.1	0.0
November	0.1	0.1	0.0	0.1	<b>0.3</b>	0.2	0.1
December	0.1	0.0	0.1	0.2	<b>0.4</b>	0.1	0.3
<b>2020</b>							
January	0.0	0.1	0.1	0.2	<b>0.4</b>	0.1	0.3

<sup>1</sup> Excluding fruit and vegetables.<sup>2</sup> Increase in prices of goods and services excluded from the core consumer price index.

CONTRIBUTION TO INCREASE IN INFLATION BY GROUP OF GOODS AND SERVICES, YEAR-TO-DATE  
(PER CENT)

Table 7

	Food <sup>1</sup>	Non-food goods	Services	Fruit and vegetables	Core inflation	Non-core inflation <sup>2</sup>
<b>2018</b>						
January	10.8	34.1	7.1	49.6	45.4	54.6
February	7.8	29.1	10.5	54.0	42.0	58.1
March	7.9	25.7	10.8	56.5	36.5	63.5
April	9.6	28.4	14.7	47.8	39.6	60.4
May	9.4	41.5	17.2	32.4	39.9	60.1
June	13.0	38.6	23.0	25.8	41.8	58.2
July	15.6	35.8	35.3	13.1	45.2	54.8
August	20.8	39.1	38.4	1.7	55.5	44.5
September	28.9	41.8	38.7	-9.0	65.1	34.9
October	34.0	42.2	33.3	-9.3	67.7	32.3
November	36.3	40.0	28.3	-4.3	66.4	33.6
December	36.4	33.9	25.3	4.5	61.0	39.0
<b>2019</b>						
January	22.3	22.1	30.9	25.0	43.8	56.2
February	21.8	21.6	25.3	31.8	48.0	52.0
March	23.9	22.6	22.8	31.5	51.6	48.4
April	24.4	22.5	22.3	30.9	52.9	47.1
May	23.6	22.3	23.6	30.2	53.7	46.3
June	24.3	24.3	30.1	21.1	59.4	40.6
July	24.8	24.7	37.6	12.8	60.2	39.8
August	30.8	29.8	43.7	-4.0	71.4	28.6
September	36.3	34.8	43.9	-15.3	81.2	18.8
October	36.5	37.6	39.3	-13.8	81.5	18.6
November	35.3	36.6	36.2	-8.5	78.7	21.3
December	34.4	33.8	34.0	-2.7	72.3	27.7
<b>2020</b>						
January	9.3	20.0	16.6	57.3	29.9	70.2

<sup>1</sup> Excluding fruit and vegetables.<sup>2</sup> Increase in prices of goods and services excluded from the core consumer price index.



CONTRIBUTION TO INCREASE IN INFLATION BY GROUP OF GOODS AND SERVICES, MONTH-ON-MONTH  
(PER CENT)

Table 8

	Food <sup>1</sup>	Non-food goods	Services	Fruit and vegetables	Core inflation	Non-core inflation <sup>2</sup>
<b>2018</b>						
January	10.8	34.1	7.1	49.6	45.4	54.6
February	3.2	21.8	15.6	58.2	36.9	63.1
March	8.1	19.4	11.3	56.9	26.7	73.3
April	13.3	34.3	23.0	26.2	46.3	53.7
May	8.8	81.6	25.2	-13.7	40.7	59.3
June	24.7	29.5	41.2	4.5	48.8	51.2
July	36.1	15.7	129.5	-73.4	73.0	27.0
August <sup>3</sup>	...	...	...	...	...	...
September	148.9	79.3	41.0	-165.7	206.7	-106.7
October	71.9	45.3	-4.7	-12.4	88.5	11.5
November	50.3	27.5	0.0	26.6	60.5	39.5
December	38.0	10.1	13.7	41.4	41.1	59.0
<b>2019</b>						
January	22.3	22.1	30.9	25.0	43.8	56.2
February	20.6	20.6	12.5	44.7	57.5	42.5
March	33.6	27.2	11.2	26.8	68.0	32.0
April	27.8	22.8	20.0	24.8	63.0	37.0
May	19.8	21.5	31.6	23.2	59.9	40.1
June <sup>3</sup>	...	...	...	...	...	...
July	30.3	29.6	128.3	-78.8	70.2	29.8
August	-35.0	-24.7	-20.7	167.8	-49.8	149.8
September	-46.2	-41.3	39.7	157.5	-65.9	165.9
October	38.8	83.0	-38.2	13.5	86.5	13.6
November	26.4	28.6	10.8	39.0	57.7	42.3
December	29.0	13.5	18.4	42.7	27.3	72.7
<b>2020</b>						
January	9.3	20.0	16.6	57.3	29.9	70.2

<sup>1</sup> Excluding fruit and vegetables.<sup>2</sup> Increase in prices of goods and services excluded from the core consumer price index.<sup>3</sup> Contribution assessments are unstable due to zero inflation.





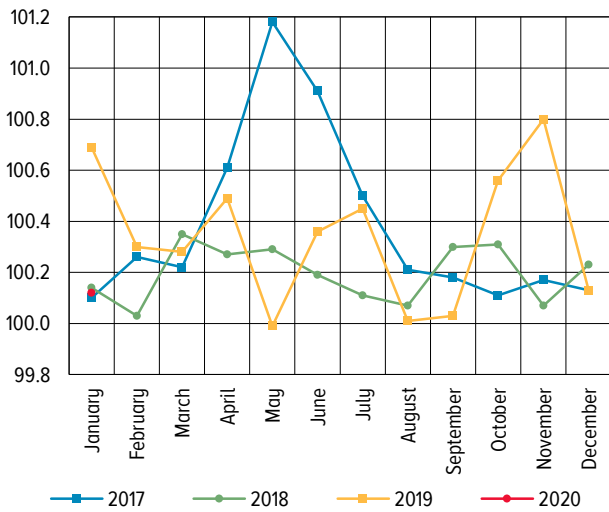






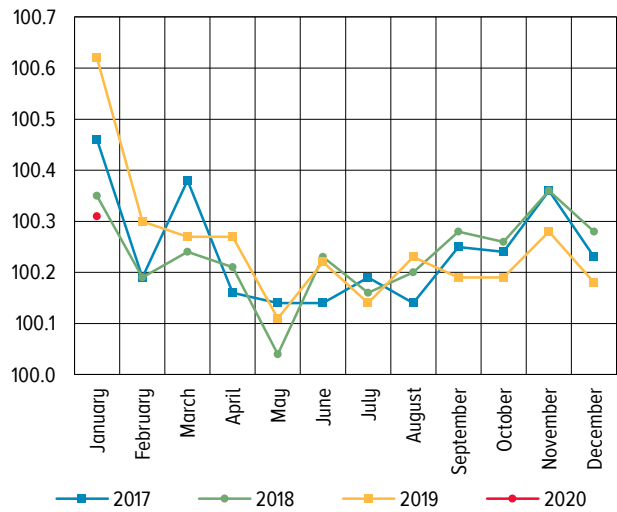
**TELECOMMUNICATIONS PRICES**  
(PER CENT CHANGE, MONTH-ON-MONTH)

Chart 31



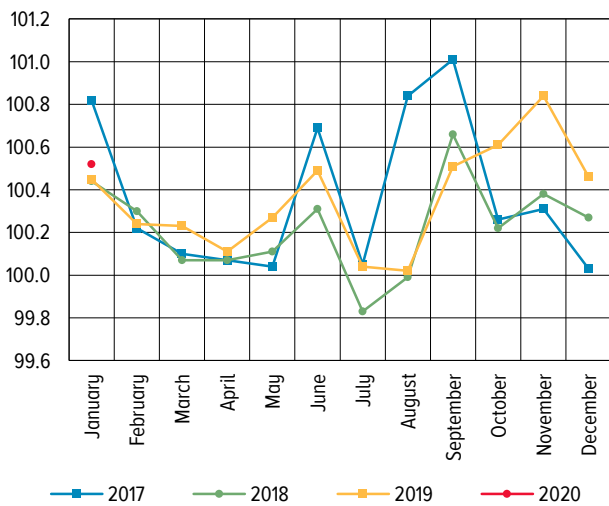
**PERSONAL SERVICES PRICES**  
(PER CENT CHANGE, MONTH-ON-MONTH)

Chart 34



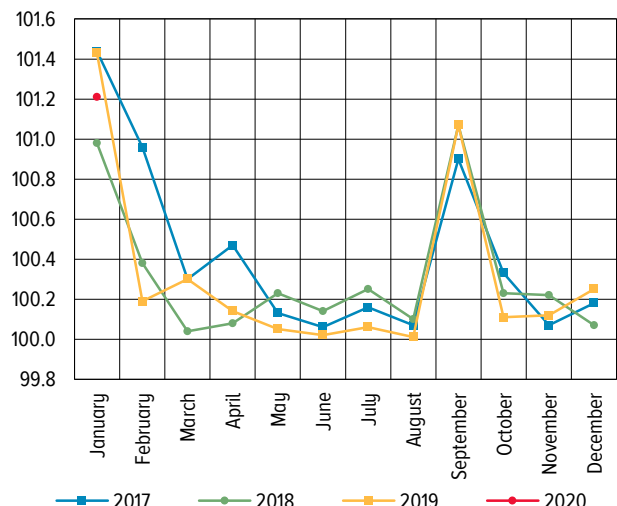
**CULTURAL SERVICES PRICES**  
(PER CENT CHANGE, MONTH-ON-MONTH)

Chart 32



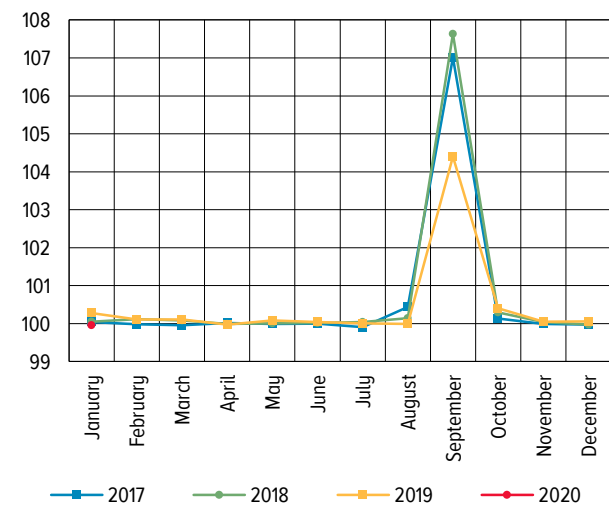
**NURSERY PRICES**  
(PER CENT CHANGE, MONTH-ON-MONTH)

Chart 35



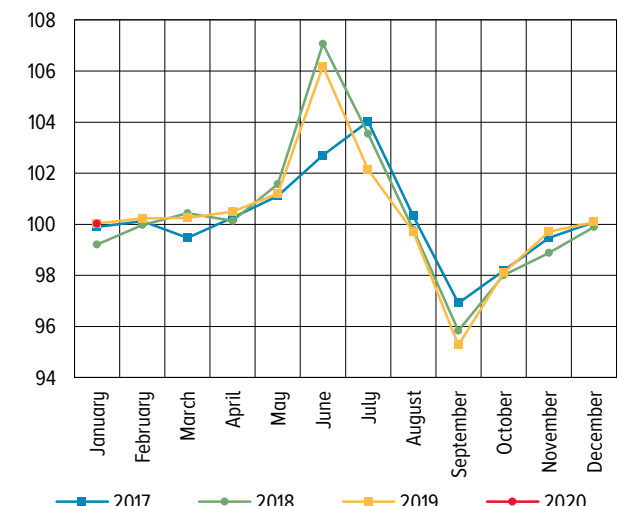
**EDUCATION PRICES**  
(PER CENT CHANGE, MONTH-ON-MONTH)

Chart 33



**SANATORIUM-AND-SPA SERVICES PRICES**  
(PER CENT CHANGE, MONTH-ON-MONTH)

Chart 36



This commentary is prepared by the Monetary Policy Department.  
Cover photo: R. Gilimshin, Bank of Russia.